



WORKTOPS

INSTALLATION

GENERAL INFORMATION

How to install your worktop, sink and appliances

GENERAL INFORMATION

To meet your expectations, it's essential to handle your worktop with care during installation, usage and maintenance.

This guide equips you with vital information for the proper installation and maintenance of your worktop.

We source our laminate exclusively from leading manufacturers. Laminate is made from compressed paper with a decorative paper layer and a protective top layer. It effectively resists common household chemicals and cleaning agents, though it is not suitable when exposed to strong acid or alkaline solutions.

Always use trivets or pads, as metal pots can become hotter than their contents, potentially causing permanent damage to the surface.

Avoid placing kettles, coffee makers, and similar appliances on or near joints, as leaks, condensation, or similar issues can lead to blistering or water infiltration, which fall outside of the warranty coverage.

Steer clear of abrasive cleaning products like scouring powder and steel wool, as these can scratch the laminate and damage its protective layer.

Promptly remove spills from red wine, ink, beet juice, and other deeply pigmented liquids to prevent staining.

Wipe up any water spills that run over the front edge of the worktop immediately to prevent damage to the underside and/or kitchen fronts. While the laminate is highly durable, always use a cutting board instead of cutting directly on the laminate surface. Additionally, avoid using objects made of clay (stoneware) and cast iron cookware, as they can scratch the worktop.

Make sure to install correct moisture protection above all heat and/or steam generating appliances.

Following these guidelines will ensure you enjoy your worktop for many years.

DELIVERY

If the goods show any visible damage, please note this on the waybill upon receipt.

Carefully inspect the worktop for any quality defects and/or damage before installation. Report any hidden manufacturing defects, quality issues or damages to the seller. Claims for all damages must be made within five (5) work days.

Any remarks regarding the worktop must be made prior to installation. Once installation begins, the installed worktops are considered approved. Any damage, such as scratches, chips, or dents, will then be regarded as installation damage and not eligible for warranty claims. Additionally, damage resulting from moisture infiltration, such as at joints, will not be covered under warranty.

TNC is not responsible for the removal and/or installation of a replacement worktop.

TRANSPORT & STORAGE

Always lift and carry the worktop with its long edge upright. The worktop must never be carried lying flat.

Under no circumstances should cutouts or drilled holes be used to carry the worktop.

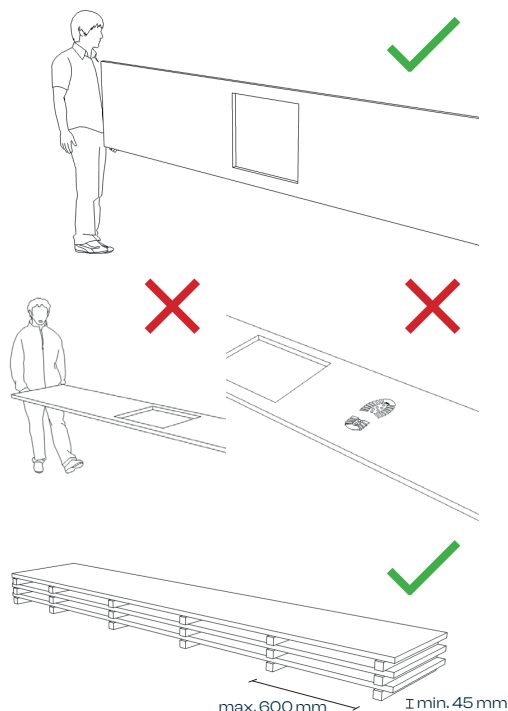
Never stand on the worktop.

Worktops must always be stored flat and never leaning against a wall.

If they need to be stored before installation, ensure they lie flat and are not propped up against any surfaces. Avoid storing them on concrete floors, in direct sunlight, in moist environments, or in any area exposed to radiant heat.

Before installation, it is recommended that the worktop acclimates for at least 48 hours. This means placing it horizontally on a flat, dry surface supported by at least 45 mm thick battens, spaced no more than 600 mm apart along the length of the worktop.

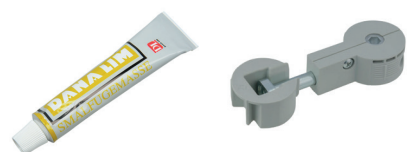
The acclimatization should occur in the room where the worktop will be installed, which should maintain a temperature between 17°C and 25°C and a relative humidity of 45% to 55%. Pay special attention to any risk of construction moisture in the area.



WHAT'S INCLUDED

What's included depends on the design of the worktop. A straight worktop without joints comes without any accessories, while a worktop with one or more joints includes both mounting brackets and sealant (**A**). Moisture and heat protection accessories, such as transparent lacquer (Art.no: WT-LACK) and aluminum tape (Art.no: WT-TAPE), are recommended and available as additional items (**B**).

A



B



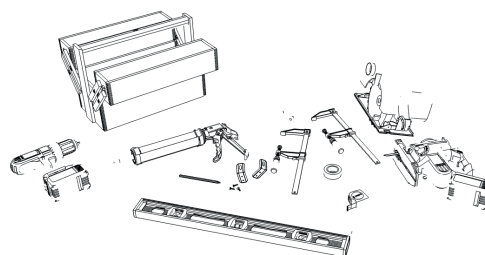
WT-LACK

WT-TAPE

TOOLS

Prepare by having the appropriate tools on hand for the installation of the worktop. Always remember to wear safety glasses and hearing protection when working with power tools.

- Plunge or circular saw
- Masking tape
- Quick release clamps
- Tape-measure
- Pencil
- Jigsaw
- Cordless drill/screwdriver
- Spirit level
- Silicon
- Angle brackets



WARNING

All electrical and plumbing work must, under all circumstances, be carried out by a qualified professional.

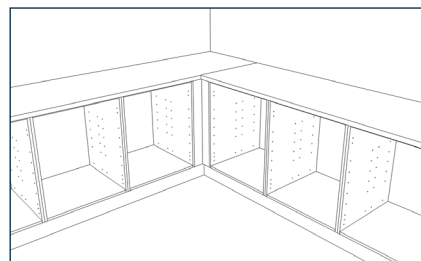
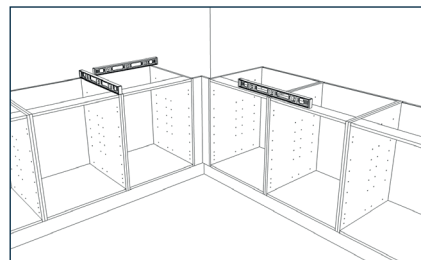
BEFORE INSTALLATION

Before installation, use a spirit level to ensure that the cabinets are level and at the correct angles to one another.

If there are even minor level discrepancies, achieving a proper joint may be challenging.

Custom worktops are manufactured according to the customer's specifications and dimensions. However, it's important to measure and verify whether the worktop needs on-site cutting. Keep in mind that walls are rarely perfectly straight, and corners may not be at a right angle.

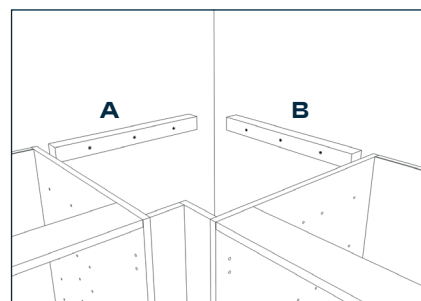
Place the worktop section loosely on the cabinets to verify that the measurements and angles are correct. After this check, remove the worktop from the cabinets. If the worktop does not fit, contact the salesperson before doing any modifications to the worktop. All angles are 90 degrees.



INSTALLATION

During installation, it is essential to protect the worktop from moisture, dirt, and damage. Place the worktop on the cabinets to ensure that it fits correctly. If the worktop is custom-made by TNC and does not fit, contact your salesperson before proceeding with the installation.

Ensure the worktop is level by using a spirit level, and confirm that the top of the cabinets are flat and stable. For corner worktops, the rear edge must be supported at points **(A)** and **(B)**. If the support is not properly configured, the joints may become loose, leading to potential moisture damage, which will not be considered a warranty issue. All joints must be adequately supported from below to prevent separation over time.



The worktops must not be under tension between walls, cabinets, or similar structures, as this can cause stress on the material, leading to warping, detachment, or cracking of sinks. We recommend ordering the worktop with a 3 mm undersize to accommodate this. Always install the worktops according to the provided instructions, ensuring they are secured, as the material can expand or contract with fluctuations in humidity.

Cut-outs

Use a plunge saw, circular saw, or jigsaw to cut the worktop. Use a fine-tooth blade and begin the cut at the front edge of the worktop. If using a jigsaw, ensure it is equipped with a down-cutting blade. If not, make the cut from the underside of the worktop.

For cut-outs for sinks, cooktops, etc., it's best to first create a template. To avoid tear-out, apply tape along the cut line. Mark the cut line on the tape using a pencil, following the template. If marking on the underside, remember to mirror the template. Begin by drilling holes at all corners using a drill bit with a diameter of at least 12 mm. Ensure corners are rounded, as sharp corners may lead to cracking later on.

Proceed to make the cut between the holes with a jigsaw or plunge saw. Make sure that the whole worktop, including the cut-out area, is supported.

Cut-outs must be placed at least 50 mm from any edge or other cut-outs. Seal all exposed chipboard edges, as they are highly susceptible to moisture. Use moisture barriers or sealing lacquer for this purpose. Be sure to seal any holes for faucets or other cut-outs as well.

Cut-outs may also be required in the cabinet structure to accommodate the sink and worktop space. Always verify whether cut-outs are necessary for the specific sink before cutting.

Joints & Sealant

Put tape **(A)** on both sides of the joint to protect the worktops from adhesive residue and to facilitate cleaning.

Do not push the worktops completely together; instead, install the joint fittings **(B)** and leave a small gap for the sealant.

Next, apply the included sealant **(C)** (not silicone or wood glue) on the chipboard. Use one (1) tube of sealant per joint and start applying from the top edge, closest to the laminate surface, to ensure that the joint is completely sealed and protected from fluids, spills etc.

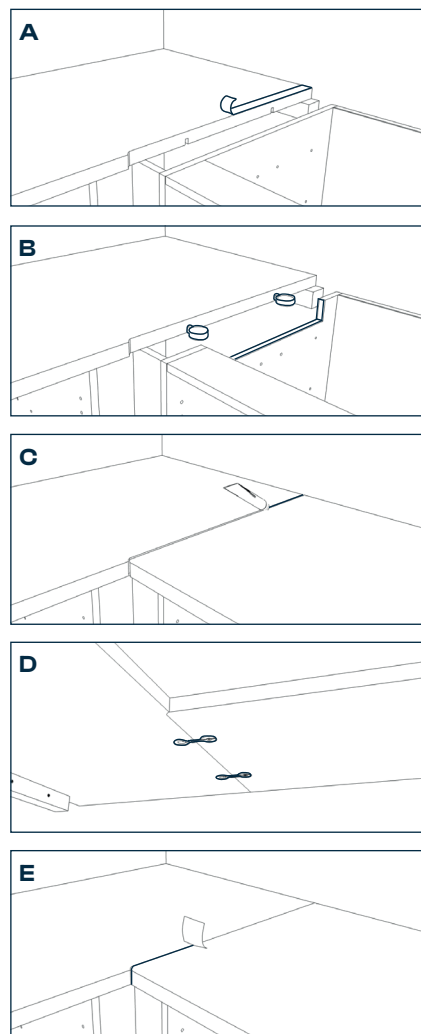
After applying all the sealant make sure that you press the worktops together within 90 seconds.

Please note that there is no warranty coverage for water infiltration at the joints.

When tighten the fastening brackets **(D)**, alternate between the front and back to ensure an even distribution of pressure. When joining the worktops, always ensure that they are aligned at the surface. During this process, any excess sealant should be pushed out as a result of proper joining. Avoid over-tightening the brackets.

After approximately 5 minutes, remove any excess sealing material using a piece of cardboard **(E)**, working from the back edge towards the front and diagonally across the joint pressing the sealant down rather than lifting it up. Any remaining sealant can be cleaned off with soapy water.

Allow the sealant to cure for 24 to 48 hours before using the kitchen.

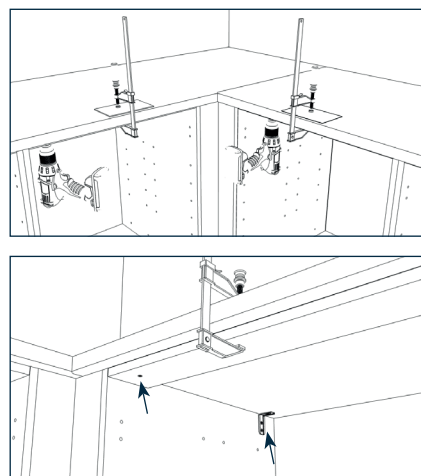


Connect

To secure the worktop to the cabinets, pre-drill holes in the top of the cabinet and use appropriate length wood screws. In the back of the cabinets, or in cabinets without top, use angle brackets between the side of the cabinet and the worktop. Please note that the screws to these brackets need to be shorter than those in the front.

We recommend placing one screw at the front and back every 60 cm. (Screws and angle brackets are not included in the delivery as standard). During installation, you can secure the worktop in place using quick release clamps. However, be sure to use protective spacers to prevent damage to the laminate surface.

The worktop must be securely fastened at the front, back and ends. The worktop should not be glued to the cabinets.



GENERAL

OVERHANG

If the worktop has an overhang of 300 mm or more, support brackets or a console must be installed. In cases where the worktop features decorative sides, angle brackets should be installed against the decorative sides to secure the worktop in place.

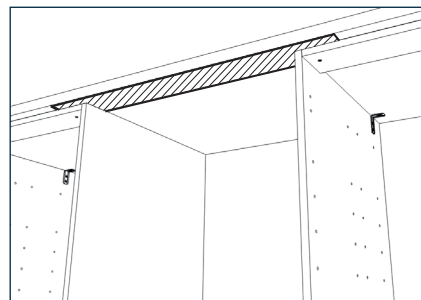
SEALING JOINTS

When installing tiles or other splash protection above the worktop, leave a few millimeters of space between the worktop and the splash guard. Seal the joint with flexible caulk, which is typically ordered alongside the tiles. It is advisable to seal the back edge behind the sink with a moisture barrier or sealing lacquer.

INSTALL DISHWASHER

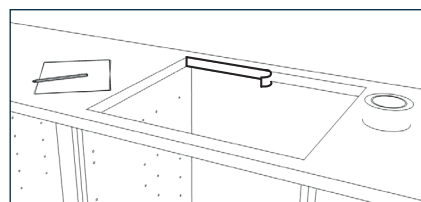
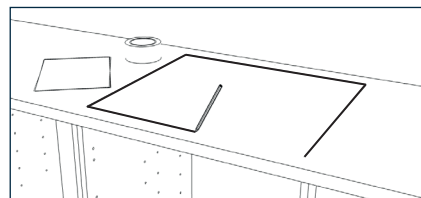
To protect the underside of the worktop from steam and heat, either apply aluminum tape to act as a barrier or add sealant lacquer under the worktop (both sold separately). The barrier should extend all the way to the front edge and 10 cm into the adjacent cabinets.

If there is a sink near the adjacent cabinets, the aluminum tape or sealant should be installed along the entire front edge and extend 10 cm into the next cabinet as well. Additionally, if a steel rail is included with the dishwasher, it should be installed at the front edge.



INSTALL HOB

This cut-out should always be done on site. Read the installation instruction for the hob and make sure to follow the dimensions and instructions written in the instructions. The cut-out for the hob should be sealed with an aluminum moisture barrier (sold as separate item), which should be folded min. 2 mm over the upper edge of the cut-out.



INSTALL STOVE

Freestanding stoves should always be elevated at least 4 mm above the level of the worktop.

OTHER APPLIANCEIS

To protect the underside of the worktop from steam above appliances, an aluminum moisture barrier must be installed (sold as separate item). Ensure that the barrier extends all the way to the front edge and additionally overlaps by 100 mm on each side.

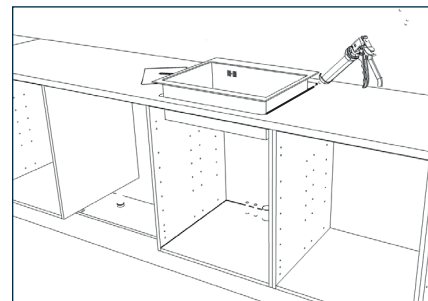
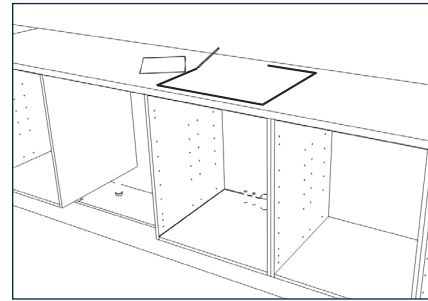
INSTALL SINK

Read the installation instruction for the sink and make sure to follow the dimensions and instructions. Before beginning the installation, be sure to read the section **Cut-outs** in this manual.

Before placing and securing the sink, seal all exposed chipboard. Any additional holes made in the worktop must be properly sealed to avoid moisture damaging the worktop.

When the worktop is positioned against a fully covering sink, seal the joint between the worktop and the sink with silicone. Ensure that the silicone penetrates fully between the worktop and the sink, extending over the laminate edge of the worktop.

A tap should ideally not be fitted directly into the laminate worktop. Use a sink with tapwing to prevent condensation from forming and penetrating the worktop.



MAINTENANCE

DAILY CLEANING

Daily cleaning typically involves using clean water and a wrung-out cloth. For heavy soiling, it is advisable to use a general-purpose cleaner. Do not use aggressive or scrubbing products as they can scratch and damage the worktop.

SINK

If the sealant has worn away to the point where it no longer provides an adequate seal, it is necessary to apply a new layer of sealant to avoid water damages. Any damage at a cut-out will never be a claim.

As a general practice, we recommend wiping down the sink with a damp cloth or towel after each use to minimize the risk of discoloration and other issues.

WARRANTY

This worktop is custom-made to your specifications and measurements. During production, the worktop undergoes a quality control process to ensure that our quality standards are met. Any damages, scratches, or marks discovered after installation are classified as installation damages and are not covered by our product warranty.

The right to make a claim is governed by purchase law and encompasses all issues related to the manufacturing of the worktop.

